

MEHROTRA 
Biotech

LAB REFRIGERATOR
PR SERIES



INTRODUCING PR SERIES LAB REFRIGERATOR

Mehrotra Biotech make PR Series lab refrigerators are designed with features that support sample protection and sustainability objectives for the storage of media, reagents, chemotherapy, pharmaceutical and other medical and laboratory-grade storage requiring 2° to 8°C.

- Designed to safely store medical and laboratory products, including vaccines, pharmaceuticals, media and reagents requiring a temperature range of 2°C to 8°C
- Whisper quiet operation, enabling end users to work alongside the refrigerator without distraction
- Advanced technology controller which is designed to detect usage patterns such as door openings, power cut-off, and periodic data storage, saving energy without compromising protection
- Up to 40% less energy consumption than conventional refrigerant models.
- Environment friendly R134a refrigerants makes PR Series refrigerators a preferred choice by scientists and drug research laboratories.
- Operating temperature range of 2° to 8°C, factory set-point at 4°C
- Lower HVAC costs as a result of less heat emission into the environment.
- Easy to use microprocessor controller with set-point security, alarms & USB data output.
- Standard door locks provide comfort and assurance
- Ergonomic door handle
- Optional chart recorders & 21CFR compliant software available



Mehrotra Biotech Lab Refrigerators are manufactured using only high-quality, stringently tested materials that are particularly suitable for low temperatures. The units are extremely quiet, have been approved with the CE mark and are maintenance-free.

All designs are subject to change. Special makes available on request.

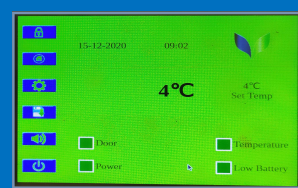
FEATURES



Temperature variation can have an impact on the viability and efficacy of vaccines, medication, reagents and other temperature-sensitive materials. These variations can shorten product shelf life, degrade enzymes and reduce vaccine effectiveness. Therefore, it is important to choose a high-performance refrigerator or freezer that has been designed for the demanding standards of the laboratory and clinical environment.

TOUCH SCREEN DISPLAY

PR360 is equipped with a full color 5 inches touch screen display control lets you easily make desired settings and take data output through USB port.



MICROPROCESSOR BASED CONTROLLER

Equipped with latest micro-controller based controller enhances the speed and accuracy of the system.



FORCED AIR CIRCULATION

Powerful yet compact axial fan enables temperature uniformity that continually adapts to the set temperature values.



QUIET OPERATION

Compared to conventional refrigerant, the PR Series offers a whisper quiet operation, so you can concentrate on your working while refrigerator is operating inside the lab.



AUDIO/VISUAL ALARM

Visual/ acoustic alarm for higher/ lower temperature, door open, power failure & low battery.



DATA EXTRACTION

Touch Screen based microcontroller having the facility of accessing the record of Temperature and alarm events as per user selected data of Date and time through USB port.



TECHNICAL SPECIFICATIONS

| MODEL FEATURES | PR 360 | PR 450 | PR 600 | PR 1000 |
|--------------------------------|--|--|--|--|
| Material of Construction (I/O) | Galvanized metal sheets | Galvanized metal sheets | Galvanized metal sheets | Galvanized metal sheets. |
| Dimensions (Internal) (WxDxH) | 476 x 531 x 1311 mm | 492 x 540 x 1664 mm | 655 x 540 x 1664 mm | 941 x 644 x 1581 mm |
| Dimensions (External) (WxDxH) | 572 x 686 x 1854mm | 600 x 730 x 1986mm | 750 x 686 x 2070mm | 1029 x 724 x 2032mm |
| Set point | +4 ⁰ C | +4 ⁰ C | +4 ⁰ C | +4 ⁰ C |
| Capacity (L) | 360 | 448 | 597 | 941 |
| Door Type | Glass door | Glass door | Glass door | Glass door |
| Door Closing | Automatic | Automatic | Automatic | Automatic |
| Weight (kg) | 83 | 101 | 115 | 187 |
| Circulation | Forced air circulation | Forced air circulation | Forced air circulation | Forced air circulation |
| Shelves | 4 (Adjustable) | 5 (Adjustable) | 5 (Adjustable) | 10 (Adjustable) |
| Display (OPTIONAL) | 5" TFT Touch Screen | 5" TFT Touch Screen | 5" TFT Touch Screen | 5" TFT Touch Screen |
| Refrigerant | R134a | R134a | R134a | R134a |
| Alarm | Power failure, Low Battery, Temperature variation, Open door | Power failure, Low Battery, Temperature variation, Open door | Power failure, Low Battery, Temperature variation, Open door | Power failure, Low Battery, Temperature variation, Open door |
| Battery backup | 6 hours | 6 hours | 6 hours | 6 hours |
| Voltage supply | 230V, 50Hz. | 230V, 50Hz. | 230V, 50Hz. | 230V, 50Hz. |
| Power Consumption | 330 W | 450 W | 550 W | 660 W |
| Chart Recorder | Optional | Optional | Optional | Optional |
| USB Port | Yes | Yes | Yes | Yes |

OPTIONAL ACCESSORIES

21 CFR COMPLIANT SCADA software System with unique controlling features: Email Configuration, Company Information, Distance monitoring, Event log App based mobile accessing monitoring features.

CIRCULAR CHART RECORDER



CASTOR WHEELS

